

Flat 1, 8-10
Buckingham
Palace Road
London, SW1W



Description

This attractive 2 double bedroom flat is situated on the 3rd floor of a Grade II listed period building. Located on Buckingham Palace Road, opposite the new Nova development and close to local restaurants, shops and cafes as well as excellent transport facilities of Victoria. Please note there is no lift in the building.

Accommodation & Amenities

- Entrance Hall
- 2 Double Bedrooms
- Bathroom
- Reception Room
- Kitchen/Breakfast Room

TERMS

Tenure: A new 125 year lease will be granted

Ground Rent: Peppercorn

Service Charge: The flat pays £5,184.21 plus VAT per annum, so £6,221.05. This includes a contribution to the sinking fund for the building.

Local Authority: City of Westminster

Price: £795,000

EPC Rating: D



Ayrton Wylie
Estate Agents & Property Consultants

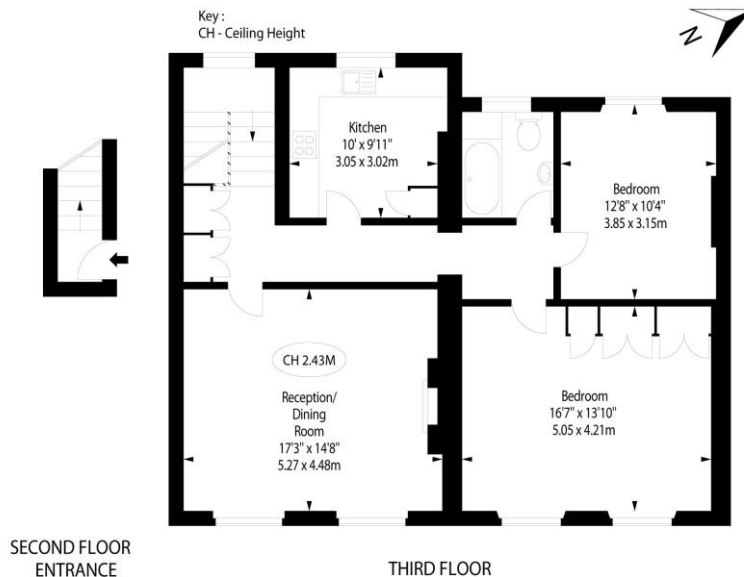
+44 20 7730 4628
sales@ayrtonwylie.com

While we endeavour to make our sale details accurate and reliable, if there is any point which is of particular importance to you, please contact the office as we will be pleased to check the information for you, particularly if contemplating travelling some distance to view the property. AYRTON WYLIE LTD GIVE NOTICE TO ANYONE READING THESE PARTICULARS THAT: I) The particulars do not constitute any part of an offer or contract. II) All statements contained in these particulars as to this property are made without responsibility on the part of Ayrton Wylie Ltd or the vendors or lessors. III) None of the statements contained in these particulars as to this property are to be relied upon as statements or representations of fact. IV) Any intending purchasers must satisfy themselves by inspection or otherwise to the correctness of each of the statements contained in these particulars. V) The vendors do not make or give and neither Ayrton Wylie Ltd nor any person in their employment has any authority to make or give any representation or warranty whatever in relation to this property. February 2020

Buckingham Palace Road, SW1

APPROX. GROSS INTERNAL AREA *
1025 Ft² - 95.22 M²

This floorplan is for GUIDANCE ONLY and NOT FOR VALUATION purposes.



**ALEX
WINSHIP**
Photography

Not to scale, for guidance only and must not be relied upon as a statement of fact. All measurements and areas are approximate only (and have been prepared in accordance with the current edition of the RICS Code of Measuring Practice).

